

Christ, Whose Glory Fills the Skies

Anthem for Mixed Voices
with Organ Accompaniment



Text
Charles Wesley
(1707-1788)

Music
T.F.H. Candlyn (1892-1964)
Choirmaster St. Thomas Church
New York (1943-1954)

Allegro

mf *cresc.*

f

T.B.

f 1. Christ, Whose glo - ry fills the skies, Christ, the true, the on - ly Light,

Sun of right-eous-ness, a - rise! Tri - umph o'er the shades of

night: Day-spring from on high, be near;

Day - star, in my heart ap - pear.

dim. *p* *rall.*

Meno mosso

2. Dark and cheer-less is the morn Un - ac - com - - - pa-nied by

2. Dark and cheer-less is the morn Un - ac - com - - - pa-nied by

8 2. Dark and cheer-less is the morn Un - ac - com - pa-nied by

2. Dark _____ is the morn Un - ac - com - - - pa-nied by

The first system contains four vocal staves and a piano accompaniment. The vocal parts are in a B-flat major key with a common time signature. The piano accompaniment consists of a right-hand melody and a left-hand bass line. The lyrics are: "2. Dark and cheer-less is the morn Un - ac - com - - - pa-nied by". The piano part includes a dynamic marking of *p* and a fermata over the first measure.

Thee; Joy-less is the day's re - turn _____ Till Thy

Thee; Joy-less is the day's re - turn _____ Till Thy

8 Thee; Joy-less is the day's re - turn _____ Till Thy

Thee; Joy-less is the day's re - turn _____ Till Thy

The second system continues with four vocal staves and piano accompaniment. The lyrics are: "Thee; Joy-less is the day's re - turn _____ Till Thy". The piano accompaniment includes dynamic markings of *cresc.* and *cresc.* above the vocal lines and *cresc.* below the piano part. The piano part features a right-hand melody with a *cresc.* marking and a left-hand bass line.

mer-cy's beams I see, *f* Till Thy in-ward light im -

mer-cy's beams I see, *f* Till Thy

8 mer-cy's beams I see, *f* Till Thy in-ward light im -

mer-cy's beams I see, *f* Till Thy

Tempo I

part, Glad my eyes and warm my heart.

in-ward light im-part, Glad my eyes and warm my heart.

8 part, Glad my eyes and warm my heart.

in-ward light im-part, Glad my eyes and warm my heart.

Tempo I

cresc.

S.A.T.B.

f 3. Vis - it then this soul of

mine! _____ Pierce the gloom of sin and grief! _____

Tuba Gt. Tuba

Fill me, Ra-dian-cy Di - vine, Scat - ter all my un - be -

Christ, Whose Glory Fills the Skies

Anthem for Mixed Voices
with Organ Accompaniment



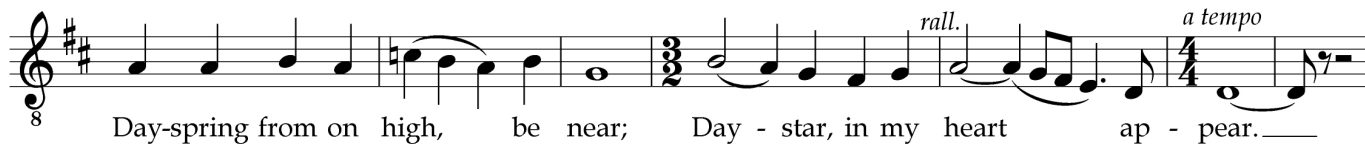
Text
Charles Wesley
(1707-1788)

Music
T.F.H. Candlyn (1892-1964)
Choirmaster St. Thomas Church
New York (1943-1954)

Allegro



Tenors & Basses



Meno mosso

p 2. Dark and cheer-less is the morn Un - ac - com - - - pa-nied by

p 2. Dark and cheer-less is the morn Un - ac - com - - - pa-nied by

p 2. Dark and cheer-less is the morn Un - ac - com - pa-nied by

p 2. Dark _____ is the morn Un - ac - com - - - pa-nied by

Thee; Joy-less is the day's re - turn Till Thy

Thee; Joy-less is the day's re - turn Till Thy

Thee; Joy-less is the day's re - turn Till Thy

Thee; Joy-less is the day's re - turn Till Thy

Thee; Joy-less is the day's re - turn Till Thy

cresc.

cresc.

cresc.

cresc.

mer-cy's beams I see, *f* Till Thy in-ward light im - part,

mer-cy's beams I see, *f* Till Thy in-ward light im -

mer-cy's beams I see, *f* Till Thy in-ward light im - part,

mer-cy's beams I see, *f* Till Thy in-ward light im -

Tempo I

part, Glad my eyes and warm my heart.

part, Glad my eyes and warm my heart.

part, Glad my eyes and warm my heart.

part, Glad my eyes and warm my heart.

