

Puer Natus in Betlehem

for two Choires:

Choire 1; for Voices based on the 4 part setting in the Pie Cantiones 1625 edition

Choire 2; for instruments such as recorders, violins and Viols
Newly composed by the editor

ANON.

ARRANGED AND EDITED BY ANDERS

STENBERG 2004

Score

Un-

A

1. Pu-er na-tus in Beth-le-hem in Beth- - - le-hem Un-
Beth- - - le-hem Un-

de gau- det Je- ru- sa- lem! Hal- le- lu- ja, hal- le- - - lu ja!

de - - gau- det Je- ru- sa- lem! Hal- le- lu- ja, hal- le- - - lu ja!
de gau- det Je- ru- sa- lem! Hal- le- lu- ja! Hal- le- - - lu ja!

6 7 8 9

8

B
10

11

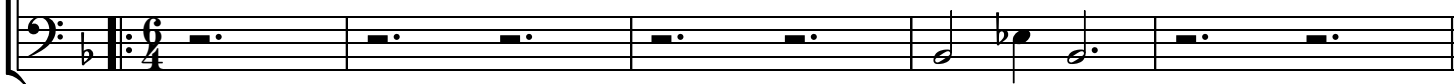
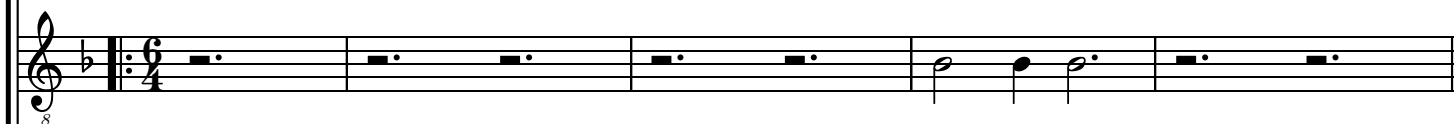
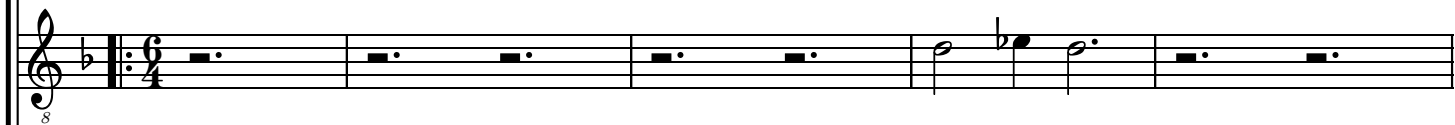
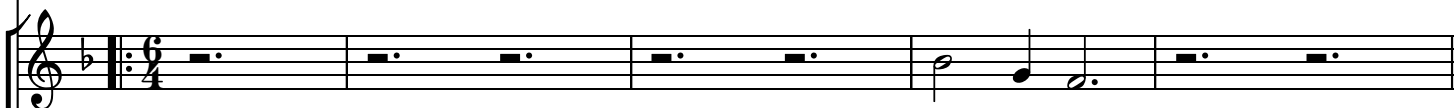
12

13

14



2. As- sum- sit car- men Ho- mi- nis Ho- - - mi-
3. Per Gab- ri- e- lis nun- ci- um, Nun- - - ci-
4. De mat- re na- tus vir- gi- ne, Vir- - - gi-
5. In hoc na- ta- li gau- di- o, gau- - - di-



2. Ver- bum Pat- ris al- tis- si- mi,
 3. Vir- go con- ci- pit fi- li- um,
 4. Si- ne vi- ri- li se- mi- na,
 5. Be- ne di- ca- mus Do- mi- no,

14 C 15 16 17 18

nis, Ver- bum - - Pat- ris al- tis- si- mi,
 um, Vir- go - - con- ci- pit fi- li- um,
 ne, Si- ne - - vi- ri- li se- mi- na,
 o, Be- ne - - di- ca- mus Do- mi- no,

2. Ver- bum Pat- ris al- tis- si- mi,
 3. Vir- go con- ci- pit fi- li- um,
 4. Si- ne vi- ri- li se- mi- na,
 5. Be- ne di- ca- mus Do- mi- no,

Hal- le- lu- ja, Hal- le- - - lu- ja!
 Hal- le- lu- ja, Hal- le- - - lu- ja!
 Hal- le- lu- ja, Hal- le- - - lu- ja!
 Hal- le- lu- ja, Hal- le- - - lu- ja!

18 19 20 21

Hal- le- lu- ja, Hal- le- - - lu- ja!
 Hal- le- lu- ja, Hal- le- - - lu- ja!
 Hal- le- lu- ja, Hal- le- - - lu- ja!
 Hal- le- lu- ja, Hal- le- - - lu- ja!

8

D
22

23

24

25

26

6. Lau-

E

26 27 28 29 30 31

de- tur sanc- ta Tri- ni- tas, tri- - - ni- tas,

Detailed description: This system contains the first two staves of music. The top staff is a vocal line in G major, starting with a treble clef and a key signature of one flat (F major). It features a melody with dotted rhythms and rests, corresponding to the lyrics. The bottom staff is a piano accompaniment in bass clef, providing harmonic support with chords and moving lines.

6. tri- ni- tas,

Detailed description: This system contains the next four staves of music. The top staff continues the vocal melody. The second and third staves are piano accompaniment in treble clef, featuring arpeggiated chords and melodic fragments. The bottom staff is piano accompaniment in bass clef, continuing the harmonic foundation with a steady eighth-note bass line.

6. De- o di- ca- mus gra- ti- as

F

G

32

33

34

35

De- o - - di- ca- mus gra- ti- as

De- o di- ca- mus gra- ti- as

De- o di- ca- mus gra- ti- as

35 36 37 38 39

Hal- le- lu- ja! Hal- le- lu- ja! Hal-

le- lu- ja!

40 41 H 42 43 44 45 46

le- lu- ja! Hal- le- lu- ja! Hal- le- lu- ja!

The image shows a musical score for a hymn. It consists of two systems of staves. The first system has a vocal line and a piano accompaniment line. The vocal line has lyrics: "le- lu- ja!" on measures 39-40, "Hal- le- lu- ja!" on measures 41-42, and "Hal- le- lu- ja!" on measures 43-45. The piano accompaniment consists of two staves. The second system also has a vocal line and a piano accompaniment line, continuing the melody and accompaniment from the first system. The key signature has one flat (B-flat), and the time signature is common time (C). Measure numbers 39 through 46 are indicated above the vocal line.