

# Variationen über *Lobt Gott, Ihr Christen*

Carl Philip Emanuel Bach  
arr. Paul Cornelson

Verse I–3 *tacet*

63 Vers 4

Flöte I

Flöte II

70

78

Verse 5–6 *tacet*

129 Vers 7

*f*

138



# Variationen über *Lobt Gott, Ihr Christen*

Carl Philip Emanuel Bach  
arr. Paul Corneilson

Verse I–3 tacet

Vers 4

63 *solo*  
p

68

73

78

82

Verse 5–6 tacet

129 Vers 7 ad libitum

135

141



Trompete I, II in B

# Variationen über *Lobt Gott, Ihr Christen*

Carl Philip Emanuel Bach  
arr. Paul Corneilson

Verse I-6 *tacet*

Vers 7

129

Trompete I  
in B

Trompete II  
in B

*f*

*f*

135

*f*

141

*tr*













# Variationen über *Lobt Gott, Ihr Christen*

Carl Philip Emanuel Bach  
arr. Paul Corneilson

## Vers I



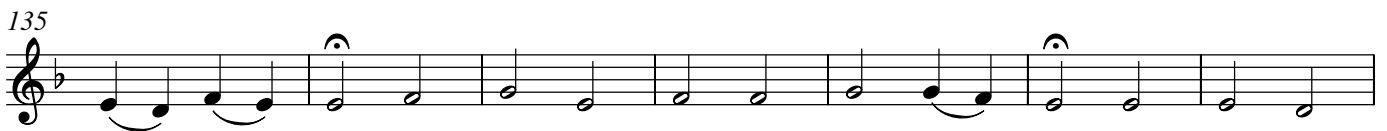
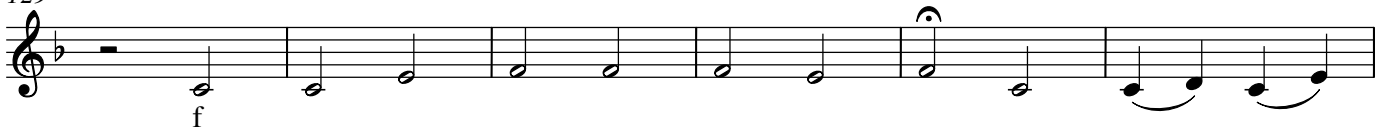
## Vers 2 tacet

## Vers 3



## Verse 4–6 tacet

## Vers 7





Viola

# Variationen über *Lobt Gott, Ihr Christen*

Carl Philip Emanuel Bach  
arr. Paul Corneilson

## Vers I

Musical notation for the first staff of 'Vers I'. It begins with a treble clef, a key signature of one flat (B-flat), and a common time signature (C). The staff contains a series of notes, including rests, with a dynamic marking 'p' (piano) below the first measure.

14

Musical notation for the second staff of 'Vers I', starting at measure 14. It continues the melodic line with various note values and rests.

## Vers 2 tacet

150 Vers 3

Musical notation for the third staff of 'Vers 3', starting at measure 150. It features a dynamic marking 'p' (piano) and includes a trill-like figure.

159

Musical notation for the fourth staff of 'Vers 3', starting at measure 159. It continues the melodic development with various note values and rests.

168

Musical notation for the fifth staff of 'Vers 3', starting at measure 168. It concludes the section with various note values and rests.

## Verse 4-5 tacet

331 Vers 6

Musical notation for the first system of 'Vers 6', starting at measure 331. It is written for a grand staff (treble and bass clefs) and includes a dynamic marking 'div.' (divisi) in the bass staff. Trills are indicated with 'tr' above notes.

337

Musical notation for the second system of 'Vers 6', starting at measure 337. It continues the grand staff notation with trills marked 'tr'.

349 Vers 7  
unis.

Musical notation for the first staff of 'Vers 7', starting at measure 349. It is marked 'unis.' (unison) and has a dynamic marking 'f' (forte) below the first measure.

362

Musical notation for the second staff of 'Vers 7', starting at measure 362. It concludes the section with various note values and rests.



Violoncello

# Variationen über *Lobt Gott, Ihr Christen*

Verse I–5 *tacet*

Carl Philip Emanuel Bach

110 Vers 6

arr. Paul Corneilson



115



120



125

Vers 7



131



136



142

