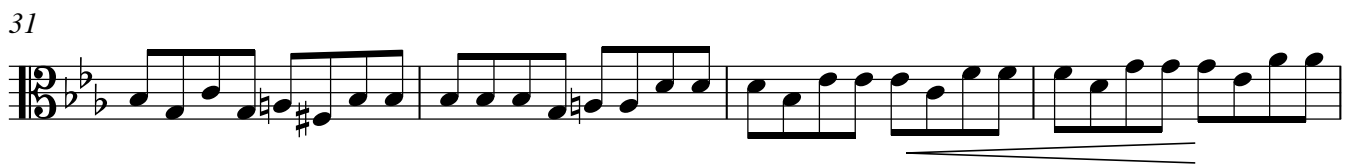
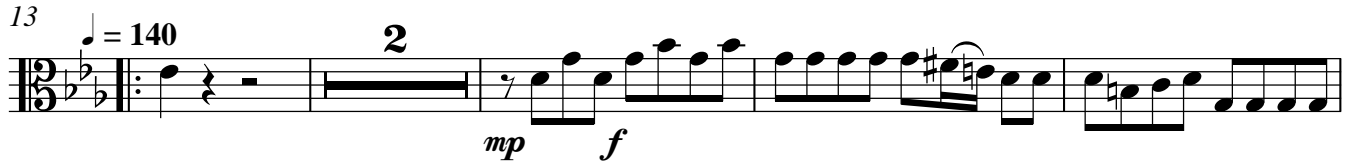


Mv'mt #

♩ = 80

1 Overture



♩ = 90

2 Aria/Chorus - Shake the cloud / Banish sorrow



♩ = 130

16

2.



22

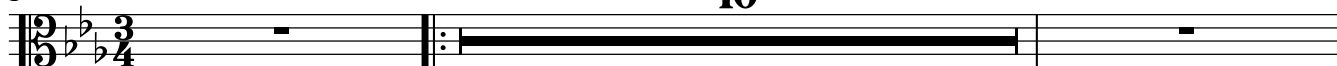


25

♩ = 90 [3] *Aria/Ritornello - Dido - Ah, Belinda*

1

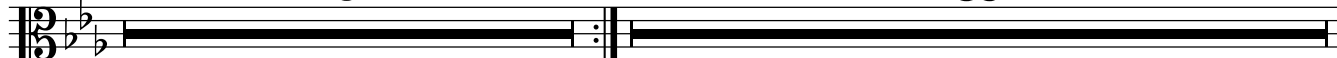
10



13

5

38



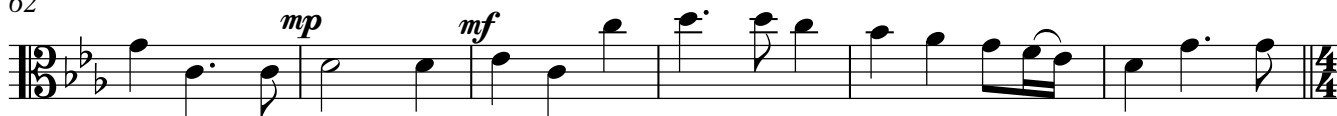
56



62

mp

mf

♩ = 90 [4] *Duet - Dido/Belinda - Grief increases*

1

3

♩ = 130

6

2



♩ = 180

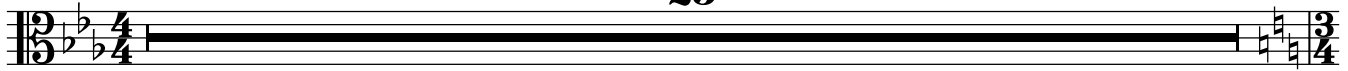
1

[5] *Chorus - When Monarchs Unite*

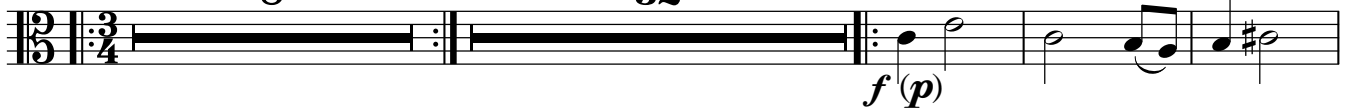
8



$\text{♩} = 60$ **6** *Trio - Dido - Belinda - 2nd Woman*
1 **25**



$\text{♩} = 180$ **7** *Duet and Chorus - Fear No Danger*
1 **8** **32**



44



53



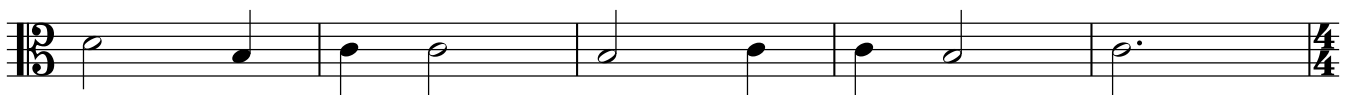
62



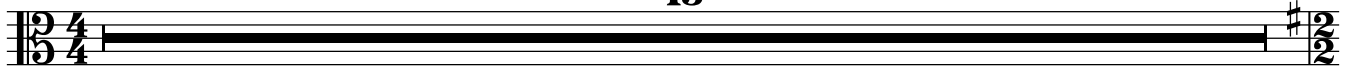
71



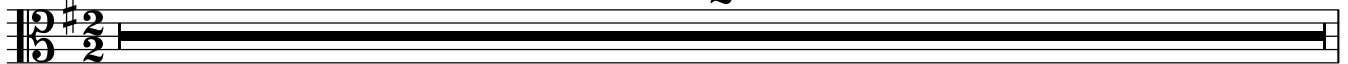
76



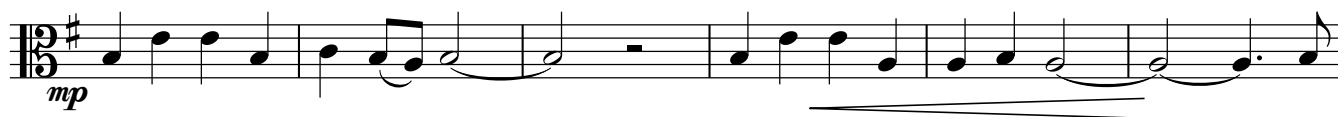
$\text{♩} = 80$ **8** *Recit. - Dido/Belinda/Aeneas - See, your royal guest*
1 **13**



$\text{♩} = 120$ **9** *Chorus - Cupid only throws the dart*
1 **2**



3



9



13



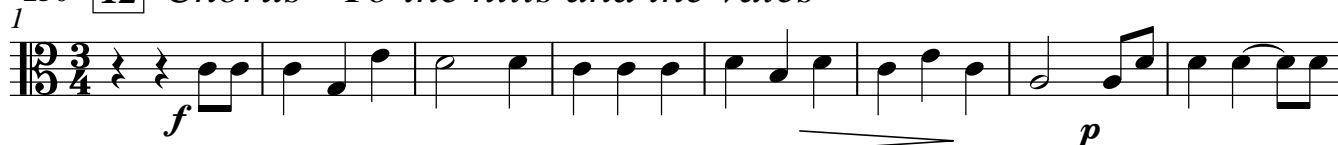
$\text{♩} = 80$ **10** *Aria - Aeneas - If not for mine*



11 *Aria - Belinda - Pursue thy conquest*



$\text{♩} = 150$ **12** *Chorus - To the hills and the vales*



9



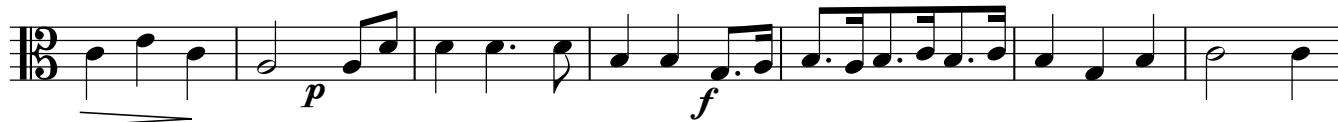
17



24



32



39



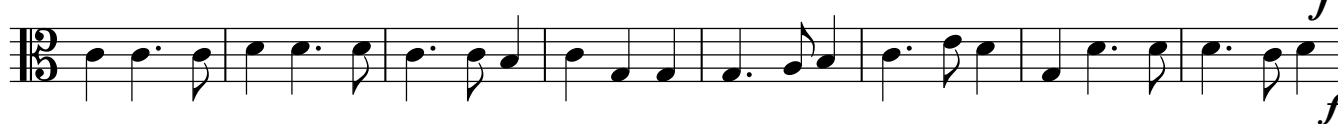
45



$\text{♩} = 130$
1 **[13]** *The Triumphing Dance*



9



17



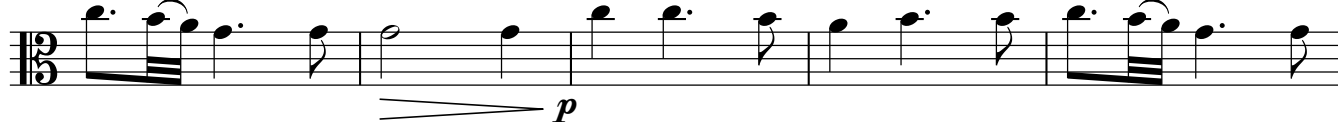
25



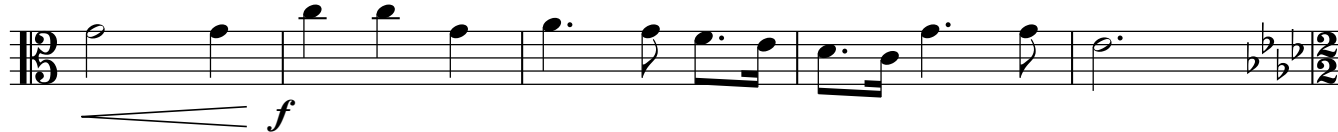
33



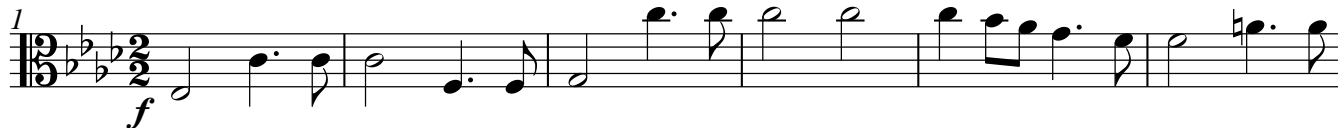
41



46



$\text{♩} = 130$
1 **[14]** *Prelude for the Witches*



7



13



20



28



32



$\text{♩} = 180$ **15** *Chorus - Harm's Our Delight*



9



$\text{♩} = 130$ **16** *Aria - The Queen of Carthage, whom we hate*



6



$\text{♩} = 100$ **17** *Chorus - Ho, Ho, Ho*



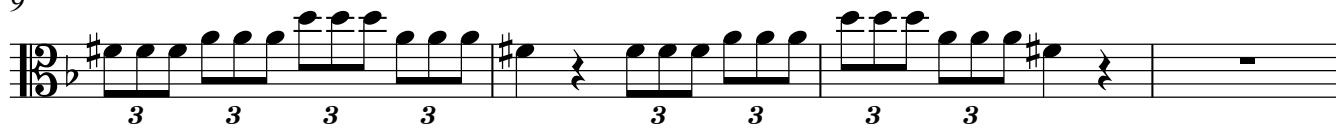
9



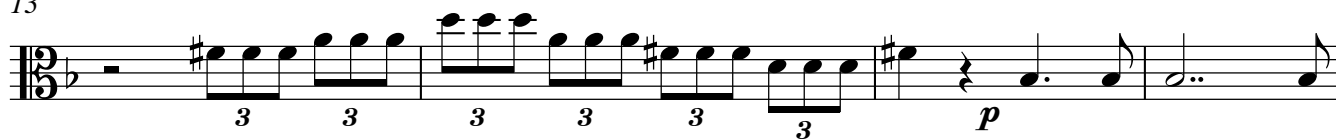
$\text{♩} = 130$ **18** *Witches' Trio - Ruin'd ere the set of sun*



9



13



17



19 *Chorus - Ho, Ho, Ho*

♩ = 130

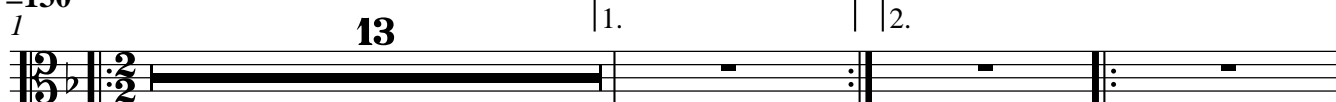


9

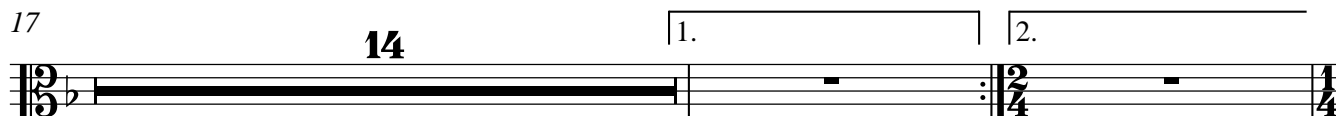


20 *Witches' Duet - But ere we this perform*

♩ = 130



17



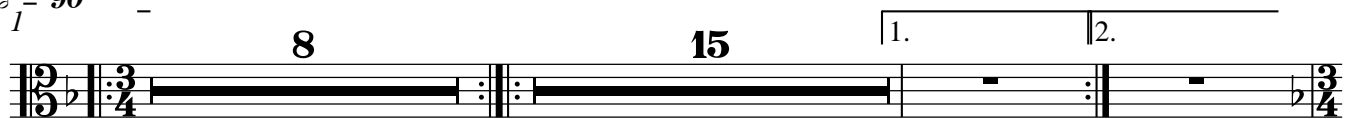
♩ = 80 **23** *Act II, Scene ii, Ritornelle*

1.  *f* [*p*] *p*

7.  (tr)

10.  *f*

♩ = 90 **24a** *Aria - Belinda - Thanks to these lonesome vales*

1.  8 15

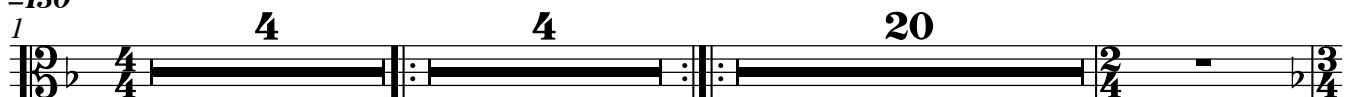
♩ = 130 **24b** *Chorus - Thanks to these lonesome vales*

1.  *mf* [*p*]

9.  *p* [*mf*]

17.  *mp*

♩ = 130 **25a** *Aria - 2nd Woman - Oft she visits*

1.  4 4 20

$\text{♩} = 130$ **25b** *Dance - Women's Dance*

1 *f*

9

14 *f*[*p*] *tr* *p*

1. 2.

$\text{♩} = 80$ **26** *Aria - Aeneas/Dido - Behold, upon my bending spear*

1 4 *ff*

8 2 *ff*

$\text{♩} = 110$ **27** *Aria and Chorus - Haste, haste to town*

1 11 *f*

15

19 *mf* *mf* *p*

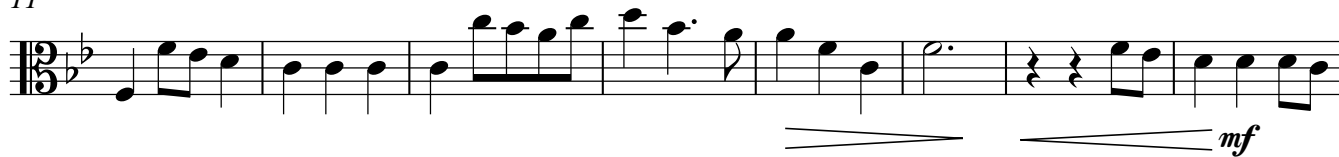
$\text{♩} = 80$ **28** *Duet - Spirit/Aeneas - Stay Prince, and hear*

1 33

$\text{♩} = 140$ **29** *Chorus - Sailor's Chorus*

1 4 *f*

11



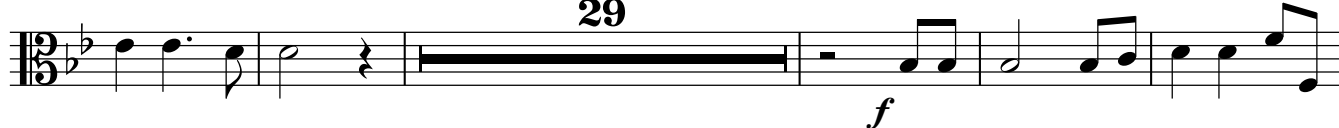
19



27



35



69



77



85



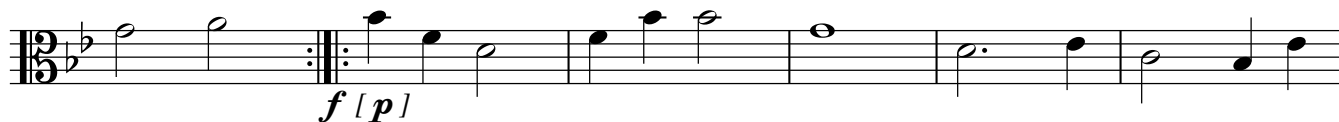
91



$\text{♩} = 160$ 30 *Dance - The Sailor's Dance*



8



12

Viola

14

1. 2. 2

1 **31** *Witches Duet*

19

32 *Sorceress's Aria*

1. 2. 12

♩ = 140 **33** *Chorus - Witches's Chorus*

f

mf

1.

2.

♩ = 80 **34** *Act III, Scene i, Witches' Dance*

f [*p*]

1. 2. ♩ = 100 *f*

16 *f* *p*

26 *p* *f*

33

38

♩ = 85 **35** *Aria / Duet - Dido - Belinda - Aeneas*

1 **54** *♩* = 60 **4**

♩ = 120 **36** *Chorus - Great minds against themselves conspire*

1 *mf*

7

10

37 *Aria - Dido - Thy Hand, Belinda*

1 **9**

$\text{♩} = 90$ 38 *Dido's Lament*

10



15



20



25



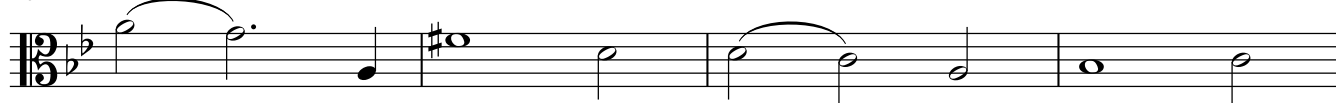
30



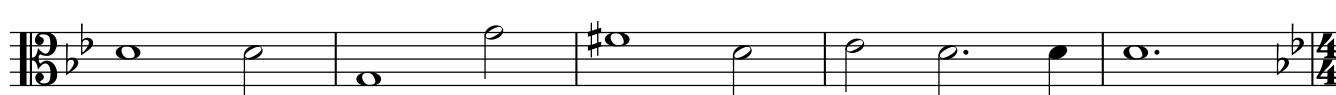
35



40



44



$\text{♩} = 100$ **39** *Chorus - With drooping wings*

