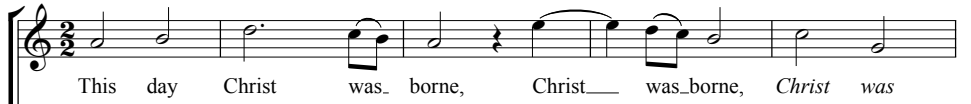


This Day Christ Was Born

Psalmes, Songs, & Sonnets 1611

William Byrd

CANTUS I
Soprano 1



CANTUS II
Soprano 2



SEXTUS
Alto 1



ALTUS
Alto 2



TENOR
Tenor



BASSUS
Bass



7

S1
borne, this day Christ was borne, this day our

S2
borne, Christ was borne, Christ was borne, This day our Sa - vi -

A1
Christ was borne, Christ was borne, This day our Sa -

A2
borne, Christ was borne, this day our Sa - vi - our

T
Christ was borne, This day Christ was borne, This day our Sa -

B
day Christ was borne, Christ was borne, this day our Sa -

13

S1 Sa - vi - our did ap - peare. This day the An - gels sing in earth,

S2 our did ap - peare, did ap - peare. This

A1 - vi - our did ap - peare, This day the An - gels sing in earth, the

A2 did ap - peare, ap - peare, did ap - peare, this day the An - gels sing in

T - vi - our did ap - peare, This day the An - gels sing in earth, this

B - vi - our did ap - peare, ap - peare,

19

S1 this day the An - gels sing in earth,

S2 day the An - gels do sing in earth, sing in earth,

A1 An - gels sing in earth, in earth, the An - gels sing in earth,

A2 earth, the An - gels sing in earth, the An - gels sing in earth, the An - gels sing in earth, in

T day the An - gels sing in earth, the An - gels sing in earth,

B This day the An - gels sing in earth, in earth,

25

S1
the Arch-an-gels are glad, _____

S2
the Arch-an-gels are glad, are glad, the Arch-an-gels,

A1
the Arch-an-gels are glad, _____ are glad,

A2
earth. The Arch-an-gels are glad, are glad, the _____

T
The Arch-an-gels are glad, are glad, _____ the Arch-an-gels are glad, the _____ Arch-an-gels are

B
the Arch-an-gels are glad, _____ the Arch-an-gels are

30

S1
are _____ glad, the Arch-an-gels are glad, are

S2
the Arch-an-gels are glad, _____ are

A1
the _____ Arch-an-gels, the Arch-

A2
Arch-an-gels are _____ glad, are _____ glad, are

T
glad, are glad, the Arch-an-gels are

B
glad, _____ are glad, _____ are

33

S1
glad, the Arch - an - gels are glad, _____ are glad.

S2
glad, the Arch - an - gels are glad. _____

A1
an - gels are _____ glad, are glad, _____ are

A2
glad, are glad, are glad, are glad.

T
glad, are glad, are glad, _____ are glad.

B
glad, _____ are glad, are glad.

36

S1
This day the just re - joyce, re - joyce, _____ this day the just re -

S2
This day the just re - joyce, _____ the just re - joyce. this day

A1
glad. This day the just re - joyce, re - joyce, _____

A2
This day the just re - joyce, _____ re - joyce, _____ re joyce, _____

T
This day the just re - joyce the just _____ re -

B
This day the just re - joyce, _____ the

40

S1 joyce, the just re - joyce, re - joyce say - ing,

S2 the just re joiye, re - joyce, say - ing, say -

A1 this day the just re - joyce, re - joyce, say - ing,

A2 this day the just re - joyce, re - joyce, re - joyce, say - ing,

T joyce, the just re - joyce, re - joyce, re - joyce, say - ing,

B just re joyce, the just re joyce, re - joyce, say - ing,

45

S1 say - - - - ing: Glo - ry be to God on high,

S2 - ing, say - - - - ing: Glo - ry be to God on

A1 say - - - - ing: Glo - ry be to God

A2 say - - - - ing, say - ing: Glo - ry

T say - - - - ing, say - - - - ing:

B say - - - - ing:

53

S1
Glo - ry be to God on high, Glo - ry

S2
high, to God on high,

A1
on high, Glo - ry be to God on high, on

A2
be to God on high, Glo - ry be to God on

T
Glo - ry be to God, Glo - ry be to God on high, on

B
Glo - ry be to God on high, on high,

60

S1
be to God on high, to God on high, on high,

S2
to God on high, Glo - ry be to God

A1
high, Glo - ry be to God, Glo - ry be to

A2
high, to God on high, Glo - ry be to God on

T
high, Glo - ry be to God, Glo - ry be to

B
Glo - ry be to God on high, to God on high,

81

S1
Al - le - lu - - - ia, Al - le - lu - - - ia,

S2
- ia, Al - le - lu - ia, Al - le - lu - - - ia, Al - le -

A1
ia, Al - le - lu - - - ia, Al - le - lu - - - ia,

A2
Al - le - lu - ia, Al - le - lu -

T
Al - le - lu - ia, Al - le - lu - ia, Al - le - lu - - - ia,

B
Al - le - lu - - - - ia, Al -

87

S1
Al - le - lu - ia, Al - le - lu - ia, Al - le - lu - - - ia.

S2
lu - ia, Al - le - lu - - - ia, Al - le - lu - - - ia.

A1
Al - le - lu - - - - - - - - - - - - - ia.

A2
- ia, Al - le - lu - - - ia, Al - le - lu - - - ia.

T
Al - le - lu - ia, Al - le - lu - - - - - ia.

B
- le - lu - ia, Al - - - le - - - lu - - - - - ia.