

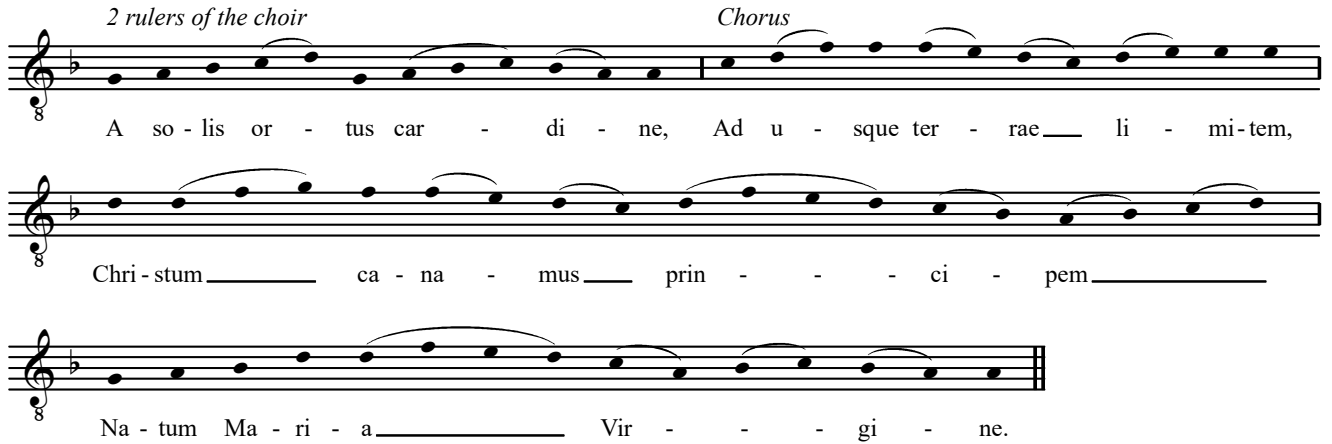
# A solis ortus cardine

Edited by Jason Smart

John Sheppard (d.1558)


v.1


*2 rulers of the choir* *Chorus*





A so - lis or - tus car - di - ne, Ad u - sque ter - rae\_\_ li - mi - tem,  
Chri - stum\_\_ ca - na - mus\_\_ prin - ci - pem\_\_  
Na - tum Ma - ri - a\_\_ Vir - gi - ne.

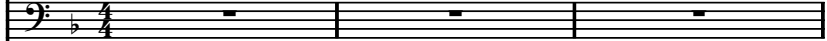
v.2


Treble 


Mean 

Countertenor 1 

Countertenor 2 

Tenor [Missing] 

Bass 



Be - a - tus  
Be - a - tus au -  
Be - a - tus au - ctor sae - cu -  
Be -

4

au - ctor sae - - - cu - - li Ser -  
 - - ctor sae - cu - - - - -  
 - - - - - - - - - - - li  
 Be - a - tus au - ctor sae -  
 Be - a - tus au - ctor sae - - - - - cu -  
 - a - tus au - ctor sae - - - - - cu - li

9

- vi - - le cor - pus in - - - du -  
 - - - - - li Ser - vi - le cor - pus in - du - it:  
 Ser - vi - le cor - pus in - du - - - - - it: Ut  
 - cu - li Ser - vi - le cor - pus in - du - - - - it:  
 - li Ser - vi - le cor - pus in - du - - - - it:  
 Ser - vi - le cor - pus in - du - it:

14

- it: Ut car - - - ne car - nem

Ut car - ne car-nem li - be - rans, ut car - ne car-nem li - be-rans, ut car - ne

car - ne car-nem li - be - - - rans, ut car - ne car-nem li - be -

Ut car - ne car - nem li - be - rans,

Ut car - ne car-nem li - be - rans, ut car - ne car-nem li - be -

Ut car - ne car-nem li - be-rans, li - be - rans,

19

li - - - - be - rans

car-nem li - be - - - - rans Ne

- rans, ut car - ne car-nem li - be-rans, li - be - rans Ne per - de -

ut car - ne car-nem li - be-rans, li - be - - - rans

- rans, li - be - rans ut car - ne car - nem li - be -

ut car - ne car-nem li - be-rans

24

Ne per - de - ret quos con -  
 per - de-ret quos con - di-dit, ne per - de-ret quos con - - - - di -  
 - ret quos con - di - dit, ne per - de - ret quos con - di - dit, ne per - de -  
 Ne per - de - ret quos con - di - dit, ne per - de - ret quos con -  
 - rans Ne per - de-ret quos con - di-dit, ne per - de - ret quos con - di - dit, ne  
 Ne per - de - ret quos con - di -

29

- di - dit.  
 - dit, quos con - di - dit, ne per - de - ret quos con - di - dit.  
 - ret quos con - di - dit, ne per - de-ret quos con - di - dit.  
 - di - dit, ne per - de - ret quos con - di-dit, quos con - di - dit.  
 per - de-ret quos con - di - dit, ne per - de-ret quos con - di - dit.  
 - dit, ne per - de - ret quos con - di - - - - dit.

v.3  
Chorus

Ca-stae pa-ren - tis vi - sce - ra, Cae - le - stis in - trat gra - ti - a:  
Ven - ter pu - el - lae ba - - - ju - lat.  
Se - cre - ta quae non no - - - ve - rat.

34 v.4

Do - mus pu - di - ci pe - cto-ris.  
Do - mus pu - di - ci pe - cto - ris, pe - cto - ris.  
Do - mus pu - di - ci pe - cto - ris, pe - cto - ris.  
Do - mus pu - di - ci pe - cto-ris, pe - cto - ris.  
Do - mus pu - di - ci pe - cto-ris, pe - cto - ris.  
Do - mus pu - di - ci pe - cto-ris, pe - cto - ris.  
Do - mus pu - di - ci

Tem-plum re - pen - te fit De - i:  
 - ris Tem - plum re - pen - te  
 Tem-plum re - pen - te fit De - - - -  
 Tem - plum re - pen - te fit De-i, re - pen - te  
 8 - cto - - - - ris Tem - plum re - pen - te  
 8 pe - - - cto - ris Tem - plum re-pen-te fit  
 pe - cto - - - - ris Tem - plum re - pen - te  
 - mus pu - di - ci pe - cto-ris Tem - plum re - pen - te

In - ta - cta ne - sci-ens vi - -  
 fit De - i: In - ta - - - - cta ne -  
 - i: In - ta - cta ne - sci-ens vi - - - - rum,  
 fit De - i: In - ta - cta ne - sci-ens vi - rum, vi -  
 8 fit De - i: In - ta - cta  
 8 De - i: In - ta - cta ne - sci-ens vi - - - -  
 fit De - i:  
 fit De - i:

- rum Ver -  
 - sci - - ens vi - - - rum  
 vi - - - - - rum Ver -  
 - - - - - rum  
 8 ne - sci - ens vi - - - - rum. vi - - - - -  
 8 - rum, in - ta - cta ne - sci - ens vi - - - - rum  
 In - ta - cta ne - sci - ens vi - rum, in - ta - cta ne - sci -  
 In - ta - cta ne - sci - ens vi - - - - rum

- bo con - ce - pit Fi - li - - - - -  
 Ver - bo con - ce - pit  
 - bo con - ce - pit Fi - li - - - - - um, ver -  
 Ver - bo con - ce - pit Fi - li - - - - - um, ver -  
 8 - rum Ver -  
 8 Ver - bo con - ce - pit Fi - li - - - - um,  
 - ens vi - rum Ver - bo con -  
 Ver - bo con - ce - pit Fi -





64 v.6

Foe - no ja - ce - - - re per - - - - tu -

Foe - no ja - ce - re per - tu - lit: \_\_\_\_\_

Foe - no ja - ce - re per - tu - lit, *per* - tu - lit:

Foe - no ja - ce - re per - tu - - - lit, per - tu - lit:

8 Foe - no ja - ce - re

8 Foe - no ja - ce - re per - tu - lit, *per* -

Foe - no ja - ce - re

Foe -

69

- lit: Prae - se - - - pe non \_\_\_\_\_ ab - -

Prae - se - pe non ab - hor - ru - it:

Prae - se - pe non ab - hor - ru - it, *ab - ho - ru -*

Prae - se - pe non ab - hor - ru - - - - -

8 per - - - tu - lit: Prae - se - pe non ab - hor -

8 - tu - - - - lit: Prae - se - pe non ab -

per - tu - - - - lit: Prae - se - pe non ab -

- no ja - ce - re per - tu - lit: Prae - se - pe non ab -

74

- hor - ru - it: Par - vo - que la -  
 Par - vo - que la - cte pa - stus  
 - it: Par - vo - que la - cte pa - stus [est,] pa -  
 - it: Par - vo - que la - cte pa - stus est,  
 8 - ru - it: Par - vo - que la - cte pa - stus  
 8 - hor - ru - it: Par - vo - que  
 - hor - ru - it:

79

- cte pa - stus est,  
 est, Per  
 - stus [est,]  
 pa - stus est, Per  
 8 est, par - vo - que la - cte pa - stus est,  
 8 la - cte pa - stus est, pa - stus  
 Par - vo - que la - cte pa - stus est, par - vo - que la - cte  
 Par - vo - que la - cte pa - stus est,

84

Per quem nec a - les  
 quem nec a - les e - su -  
 Per quem nec a - les e - su - rit, per  
 quem nec a - les e - su - rit, per  
 8 Per quem nec a - les e - su - rit,  
 8 est, Per  
 pa - stus est, Per quem nec  
 Per quem nec a - les e -

89

e - su - rit.  
 - rit, e - su - rit.  
 quem nec a - les e - su - rit, per quem nec a - les e - su - rit.  
 quem nec a - les e - su - rit, per quem nec a - les e - su - rit.  
 8 per quem nec a - les e - su - rit, per quem nec a - les e - su - rit.  
 8 quem nec a - les e - su - rit, per quem nec a - les e - su - rit.  
 a - les e - su - rit, per quem nec a - les e - su - rit.  
 - su - rit.

v.7



Gau-det cho-rus\_\_\_ cae - le - sti - um Et An - ge - li\_\_\_ ca - nunt\_\_\_ De - o:



Pa - lam - que fit\_\_\_ pa - sto - - - ri - bus\_\_\_



Pa - stor, cre - a - tor\_\_\_ o - - mni - um.

94 v.8



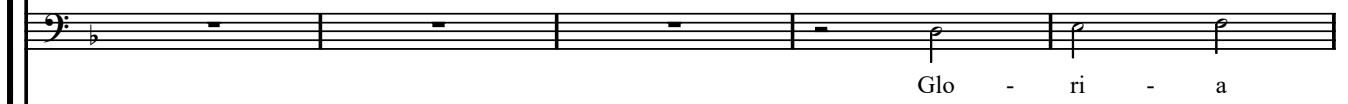
Glo - ri - a ti - - - bi, Do -



Glo - ri - a ti - - - bi, Do -



Glo - ri - a ti - bi, Do - mi - - - -



Glo - ri - a



Glo - ri - a ti - bi,

99

mi - ne, Qui na - tus es.

mi -

Glo - ri - a ti - bi, Do - mi - ne, Qui

ne, Qui na - tus es de vir - gi -

ti - bi, Do - mi - ne, Qui na - tus

Do - mi - ne,

104

de vir - gi - ne, Cum Pa -

ne, Qui na - tus es de vir - gi - ne, Cum Pa - tre et San - cto Spi - ri -

na - tus es de vir - gi - ne, Cum Pa - tre et San - cto

ne, Cum Pa - tre et San - cto Spi - ri -

es de vir - gi - ne, Cum Pa - tre et San - cto Spi - ri -

Qui na - tus es de vir - gi - ne, Cum Pa - tre et San - cto

109

- tre et San - cto Spi -

- tu, cum Pa - tre et San - cto Spi - ri - tu, cum Pa - tre et San - cto Spi - ri -

Spi - ri - tu, cum Pa - tre et San - cto Spi -

- tu, cum Pa - tre et San - cto Spi - ri - tu, cum Pa - tre et San - cto

- tu, cum Pa - tre et San - cto Spi - ri - tu, Spi - ri - tu,

Spi - ri - tu, Spi - ri - tu,

114

- ri - tu, In sem - pi - ter -

- tu, In sem - pi - ter - na sae - cu - la, in

- ri tu, Spi - ri - tu, In sem - pi - ter - na sae - cu -

Spi - ri - tu, [Spi - ri - tu,] In sem - pi - ter - na sae - cu - la, in sem - pi -

cum Pa - tre et San - cto Spi - ri - tu, In sem - pi - ter - na

cum Pa - tre et San - cto Spi - ri - tu,

119

- na - - - - - sae - - - - - cu -

sem - pi-ter - na sae - cu - - - - la, sae - cu - la,

- la, in sem - pi - ter - na sae - cu - la, in sem - pi - ter - na

- ter - na sae - cu - - - - la, in sem - pi - ter - na sae - cu - la, in

sae - cu - la, in sem - pi - ter - na sae - cu - la, in sem - pi - ter - na sae - cu - la, in

In sem - pi - ter - na sae - cu - - - - la, in sem - pi -

124

- la. A - - - - - men. - - - - -

in sem - pi - ter - na sae - cu - la. A - - - - - men.

sae - cu - la, sae - - - - - cu - la. A - - - - - men.

sem - pi - ter - na sae - cu - la. A - - - - - men.

sem - pi - ter - na sae - cu - la. A - - - - - men.

- ter - na sae - cu - - - - la. A - - - - - men.

## Translation

1. From lands that see the sun arise to the earth's remotest boundaries, we sing of Christ, the Prince born of the Virgin Mary.
2. The blessed maker of this age took a servant's body, so that, by freeing flesh from flesh, what he had created might not be destroyed.
3. Into that chaste parent's womb the celestial grace entered; the girl's womb carried secrets she did not know.
4. The home of that pure breast suddenly became a temple of God: untouched, not knowing a man, she conceived a son by the Word.
5. She gave birth to the child of whom Gabriel had spoken; he whom John [the Baptist], enclosed within his mother's womb, had sensed.
6. He deigned to lie in hay, he did not abhor the manger; and the little one was fed milk: he through whom not a bird goes hungry.
7. The heavenly choir rejoiced and the angels sang to God, and made known to the shepherds the Shepherd, the creator of all.
8. Glory be to you, O Lord, born of the Virgin, with the Father and the Holy Spirit, for all eternity. Amen.

## Liturgical Function

In the pre-Reformation Use of Sarum *A solis ortus cardine* was the hymn at Lauds and Second Vespers on Christmas Day. It was also sung at Lauds on the Sixth Day of Christmas and at First Vespers, Lauds and Second Vespers on the Feast of the Circumcision (1 January).

## Editorial Conventions

The nomenclature of the voice-parts follows the Tudor convention.

The original clef, staff signature, mensuration symbol and first note of each part are shown on the prefatory staves. Editorial accidentals are placed above the notes concerned and remain operative throughout the bar.

Ligatures are denoted by the sign  $\overline{\quad}$ .

Spelling of the text has been modernised.

Text repetition signs in the underlay have been expanded editorially in italics.

## Sources

Polyphony: Oxford, Christ Church, Mus. 979–83 (c.1575–1581 with later additions; lacking T).

|     |            |        |                      |   |
|-----|------------|--------|----------------------|---|
| 979 | (M1)       | no.109 | at end:              | m <sup>F</sup> S                            |
| 980 | (Ct1)      | no.109 | at end:              | S   |
| 981 | (Ct2)      | no.109 | at end:              | m <sup>F</sup> S                            |
| 982 | (Tr1, Tr2) | no.109 | at head of page:     | 8 partes                                    |
|     |            |        | at beginning of Tr1: | <i>primus</i> triplex·                      |
|     |            |        | at end of Tr1:       | m <sup>F</sup> : S                          |
|     |            |        | at beginning of Tr2: | <i>Secundus</i> : triplex·                  |
|     |            |        | at end of Tr2:       | m <sup>F</sup> : J: Sheppede·               |
| 983 | (B)        | no.109 | index heading:       | M <sup>F</sup> John Shepperde. [later hand] |
|     |            |        | at end:              | m <sup>F</sup> : S·                         |

Plainsong: *Hymnorum cum notis opusculum usui insignis ecclesie Sarum* (Antwerp, 1541), f.8.



## Notes on the Readings of the Sources

In the notes below, each reference to a bar or group of bars is separated by an oblique stroke. Within these references multiple readings in the same voice are separated by commas and readings in different voices by semicolons. The order within each entry is: 1) bar number; 2) voice; 3) reading of the source. For extended references subsequent bar numbers are in brackets. Pitches are in capital letters, preceded by a number where necessary, e.g. <sup>1</sup>E = first note E in the bar.

### Accidentals

13 B ♯ for <sup>1</sup>E / 53 B ♭ for B / 83 B ♭ for B / 107 Ct2 ♯ for B /

### Underlay

5 M sl for CF; B slur for CE / 14–18 Tr M Ct1 B *carne* for *carnem* / 16 Ct2 slur for EC (only) / 18 Ct1 slur for FD (only) / 20–21 Ct2 slur for F<sup>1</sup>D<sup>1</sup>E / 22 Ct1 *-be-* ambiguously aligned below FB<sup>2</sup>G (but clear in 22 Ct2) / 30 Ct2 *perdi-* for *perde-* / 32 Ct1 slur for FE<sup>1</sup>D; Ct2 slur for CA / 36 M1 *-nis* below G / 62 Ct2 slur for FE<sup>1</sup>D / 72–73 M1 *-it* ∷ ambiguously aligned below C<sup>3</sup>DAG / 77 M1 slur for <sup>1</sup>GA; 77–78 Ct1 *-stus est* ambiguously aligned below <sup>2</sup>DG BA / 81 Ct1 slur for DA / 82–83 B *-stus* ambiguously aligned below A<sup>2</sup>B / 83 Ct1 *-stus* below B / 88 Tr1 *e-* below E (not in 89) / 92 Ct1 slur for FE<sup>1</sup>D / 98 M *-bi Do-* one note later (cf. bar 16); B slur for CE / 99 B *-mi* below A / 105 Ct1 *-ne* below D / 104 Ct1 *est* for *es* / 106 M *-ne* below <sup>1</sup>G / 111 Ct2 slur for FD<sup>1</sup>E / 113–114 Tr *-ri-* below E; *-tu* below C, (115) *in* below B, (117–119) *sempiterna* all one note earlier) / 115 M *Spiri-* below <sup>1</sup>DC / 120 Tr *sae-* below E, (122) *-cu-* below B, (123) *-la* below B / 125 Ct1 *-cu-* below F; Ct2 slur for FE<sup>1</sup>D /

### Other readings

1–35 Tr2 has rests with *beatus auctor.* below staff / 40 Tr1 B is A / 91–92 Tr2 FE for E<sup>2</sup>D / 93 Tr2 <sup>2</sup>E omitted / 94–end Tr2 has rests with *Gloria tibi domine.* below staff / 124–end Tr the note values may perhaps be only an approximate guide to the intended duration of those notes.