

DOMINE AD ADJUVANDUM

D O - mine ad ad - ju - vandū me festi - na fe - sti -
na ad adju - vandū me festi - na fe sti - na - - fe -

Rupert Ignaz Mayr
1646 - 1712

Cantus
Altus
Tenor
Bassus

Do - mi - ne ad ad - ju - van - dum me fes - ti - na, fes - ti -
Do - mi - ne ad ad - ju - van - dum me fes - ti -
Do - mi - ne ad ad - ju -

Violino 1
Violino 2
Viola 1
Viola 2
Violon
B.C.

6 4 # b b 4 # # 3 4 6
2

Sources: Psalmorum ad Vesperas per totum annum, Augsburg, 1706
Note values in triplum halved.

4

C na, ad ad - ju - van - dum me fes - ti - na, fes - ti - na, fes - ti -

A na, ad ad - ju - van - dum me fes - ti - na, fes - ti - na, fes - ti -

T van-dum me fes - ti - na, fes - ti - na, fes - ti - na, fes - ti - na, fes - ti -

B Do - mi-ne ad ad - ju - van - dum me fes - ti - na, fes - ti - na, fes - ti -

Vn1

Vn2

Va1

Va2

Vn

B.C.

b 3 4 6 # 6 4 # # 6

2

8

C na. Glo - ri - a Pa - tri et Fi - li - o, et Spi - ri - tu - i, Spi - ri - tu - i San -

A na. Glo - ri - a Pa - tri et Fi - li - o, et Spi - ri - tu - i, Spi - ri - tu - i San -

T na. Glo - ri - a Pa - tri et Fi - li - o, et Spi - ri - tu - i, Spi - ri - tu - i San -

B na. et Spi - ri - tu - i, Spi - ri - tu - i San -

Vn1

Vn2

Va1

Va2

Vn

B.C.

6 7 6 6 4 3

12

C

A

T

B

cto. Si-cut e - rat, si-cut e - rat in prin - ci - pi-o, et nunc, et nunc, et

Vn1

Vn2

Va1

Va2

Vn

B.C.

6 6 6 # 5 6 6 5 6

16

C

A

T

B

16 et in sæ - cu - la sæ - cu - lo - rum. A -

et in sæ - cu - la et in sæ - cu - la sæ - cu - lo - rum. A -

et in sæ - cu - la sæ - cu - lo - rum. A -

nunc et sem - per, et in sæ - cu - la sæ - cu - lo - rum. A -

Vn1

Vn2

Va1

Va2

Vn

B.C.

5 4 # # # 6 b 7 # 4 #

19

C men. Al - le - lu - - - - ja.

A 19 men. Al - le - lu - - - - ja.

T 8 men. Al - le - lu - - - - ja.

B men. Al - le - lu - - - - ja.

Vn1

Vn2

Va1

Va2

Vn

B.C.

b

22

* From Septuagesima till Easter

C Laus ti - bi Do - mi - ne Rex æ - ter - næ glo - ri - æ.

A 22 Laus ti - bi Do - mi - ne Rex æ - ter - næ glo - ri - æ.

T 8 Laus ti - bi Do - mi - ne Rex æ - ter - næ glo - ri - æ.

B Laus ti - bi Do - mi - ne Rex æ - ter - næ glo - ri - æ.

Vn1

Vn2

Va1

Va2

Vn

B.C.

b

DOMINE AD ADJUVANDUM

Rupert Ignaz Mayr
1646 - 1712

6

11

15

19

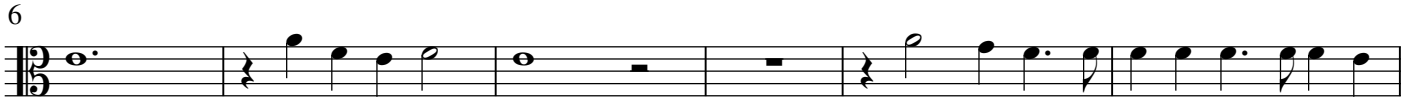
DOMINE AD ADJUVANDUM

Rupert Ignaz Mayr
1646 - 1712

Musical score for Violino 2, Domine ad Adjuvandum by Rupert Ignaz Mayr. The score is written in treble clef with a key signature of one sharp (F#) and a 3/2 time signature. It consists of five staves of music. The first staff begins with a treble clef and a 3/2 time signature. The second staff starts with a measure rest and is numbered 5. The third staff starts with a measure rest and is numbered 10. The fourth staff starts with a measure rest and is numbered 14. The fifth staff starts with a measure rest and is numbered 18. The piece ends with a double bar line.

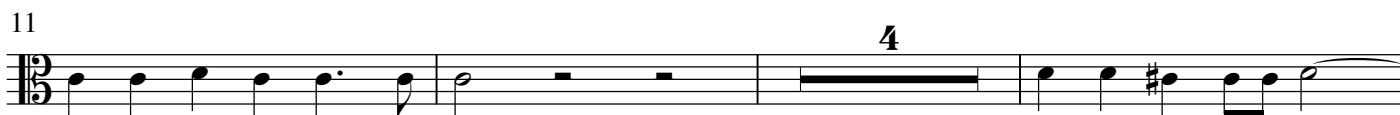
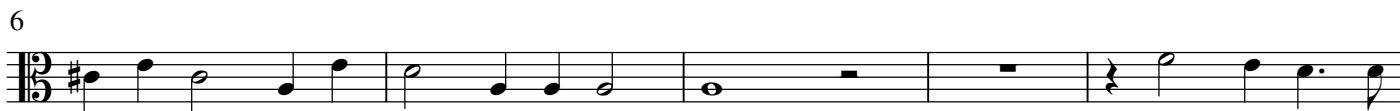
DOMINE AD ADJUVANDUM

Rupert Ignaz Mayr
1646 - 1712



DOMINE AD ADJUVANDUM

Rupert Ignaz Mayr
1646 - 1712



DOMINE AD ADJUVANDUM

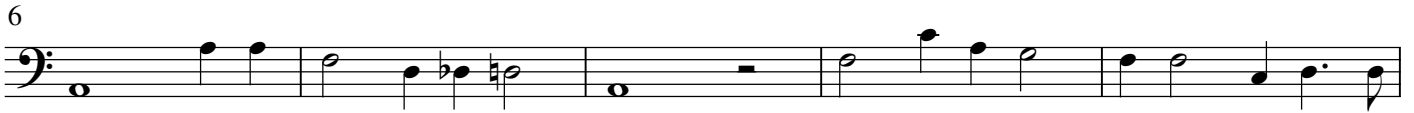
Rupert Ignaz Mayr
1646 - 1712



Basso continuo
& Violon combined

DOMINE AD ADJUVANDUM

Rupert Ignaz Mayr
1646 - 1712



DOMINE AD ADJUVANDUM

Rupert Ignaz Mayr
1646 - 1712

